

### Base Kit

- 1 Tall Side Shelf (A)
- 2 Short Side Shelf (B)
- 3 Shoe Cubby Top (C)
- 4 Shoe Cubby Bottom (D)
- 5 Vertical Shelf Panel (E) (x2)
- 6 Top / Bat Rack (F)
- 7 Shelf (G)
- 8 Trim Piece (H)
- 9 Long Hanger Board / Stretcher (I)
- 10 Short Hanger Board / Stretcher (J)
- 11 Kreg Quick-Flip

### Included in Bundle

- 12 Kreg Pocket-Hole Jig 520PRO
- 13 VersaGrip™ Clamp – 24"
- 14 Shelf Pin Jig
- 15 Shelf Pins
- 16 Material Thickness Gauge / Hex Wrench
- 17 #2 Driver Bit
- 18 Easy-Set Drill Bit and Stop Collar
- 19 1 1/4" Pocket-Hole Screws

## WOODWORKING KIT

## SPORTS STORAGE



### STEP 1:

Set Up Your Pocket-Hole Jig  
Scan here to watch the assembly video.



**Note:** You can use most Kreg Pocket-Hole Jigs for this project. Be sure to set up and use your jig according to the manufacturer's instructions, and follow this guide for proper hole placement.

- I. Use Material Thickness Gauge to measure material thickness (3/4").
- II. Set jig material thickness to 3/4".
- III. Set drill bit stop collar to 3/4" (loosen and tighten Stop Collar with Hex Wrench).

## BEFORE YOU GET STARTED

We want to make sure have you the guidance and resources you need to be successful with this project. Simply scan the QR code below for tips and tricks on setting up your jig, drilling pocket holes, and more.



**WARNING:** Drilling, sawing, sanding or machining wood products can expose you to wood dust, a substance known to the State of California to cause cancer. Avoid inhaling wood dust or use a dust mask or other safeguards for personal protection. For more information go to [www.P65Warnings.ca.gov/wood](http://www.P65Warnings.ca.gov/wood).

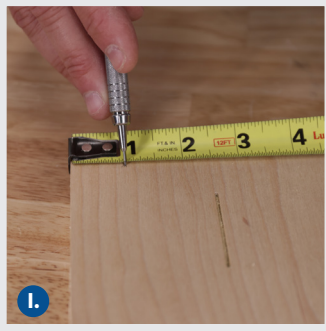
**WARNING:** Improper assembly, hanging or excessive weight applied to the finished product could result in injury. Follow all instructions provided for assembly. Kreg is not responsible for injuries as a result of improper assembly or use.

**WARNING:** Always wear personal protective equipment certified as such, including safety glasses, hearing protection, and respiratory protection. When using a power tool, always follow the manufacturer's personal protection equipment requirements. Gloves are recommended for handling unfinished wood products.

## STEP 2:

### Drill Pocket Holes in Tall Side Shelf

**Note:** Drill pocket holes into sides where part letters are displayed EXCEPT (C), C is the only panel you drill into the blank side.



- I. On the end of Tall Side Shelf (A) with reference line, measure and mark 1" in from the edge.
- II. Clamp Tall Side Shelf (A) so outside drill guide aligns with mark.

- III. Drill one pocket hole using the outside drill guide.

## STEP 3:

### Drill Pocket Holes in Short Side Shelf



- I. Clamp onto a long side of Short Side Shelf (B) so the outside drill guide is approximately 1" in from edge.
- II. Drill four evenly spaced pocket holes along one edge.

## STEP 4:

### Drill Pocket Holes in Shoe Cubby Top

**Note:** For this step, drill pocket holes into the blank side of the piece without lettering or reference lines.



- I. Clamp onto a long side of Shoe Cubby Top (C) so that outside drill guide is approximately 1" in from edge.
- II. Drill four evenly spaced pocket holes.

- III. Rotate Shoe Cubby Top (C) counter-clockwise 90° and drill four evenly spaced pocket holes in the short side.

## STEP 5:

### Drill Pocket Holes in Shoe Cubby Bottom



I. Clamp onto short side of Shoe Cubby Bottom (D) so that outside drill guide is approximately 1" in from edge.



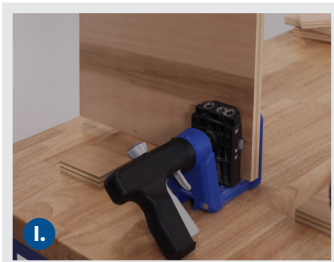
II. Drill four equally spaced pocket holes.



III. Flip Shoe Cubby Bottom (D) and drill four evenly spaced pocket holes in the opposite short side.

## STEP 6:

### Drill Pocket Holes in Vertical Shelf Panels



I. Clamp onto a short side of one Vertical Shelf Panel (E) so that outside drill guide is approximately 1" in from edge.



II. Drill four equally spaced pocket holes.



III. Flip Vertical Shelf Panel (E) and drill four evenly spaced pocket holes in the opposite end.



IV. Repeat this step for the second Vertical Shelf Panel (E).

## STEP 7:

### Drill Pocket Holes in Long Hanger / Stretcher



I. Clamp Long Hanger Board / Stretcher (I) so it is centered in jig.



II. Drill two pocket holes.



III. Flip Long Hanger Board / Stretcher (I) and drill two pocket holes in the opposite end.



IV. Rotate Long Hanger Board / Stretcher (I) clockwise 90° and drill four pocket holes.

**Note:** Align jig to space pocket holes so they are approximately 1" from the edge of existing pocket holes.



## STEP 8:

### Drill Pocket Holes in Short Hanger Board / Stretcher



- I. Clamp onto short side of Short Hanger Board / Stretcher (J) so it is centered in jig.
- II. Drill two pocket holes.
- III. Flip Short Hanger Board / Stretcher (J) and drill two pocket holes in the opposite end.



- IV. Rotate Short Hanger Board / Stretcher (J) clockwise 90° and drill two pocket holes in the long side.

**Note:** Align jig to space pocket holes so they are approximately 1" from the edge of existing pocket holes.

## STEP 9:

### Assemble Shoe Cubby Top and Sides

**Tip:** Adjust drill clutch for driving screws.



- I. Clamp Tall Side Shelf (A) to Shoe Cubby Top (C) using the reference lines to align the pieces.
- II. Use #2 driver bit to drive 1 1/4" pocket-hole screws.



- III. Clamp Short Side Shelf (B) to Shoe Cubby Top (C).
- IV. Use #2 driver bit to drive 1 1/4" pocket-hole screws.



## STEP 10:

### Attach Shoe Cubby Bottom



- I. Clamp Shoe Cubby Bottom (D) to Shoe Box assembly.



- II. Use #2 driver bit to drive 1 1/4" pocket-hole screws.

## STEP 11:

### Attach Trim Piece to Shoe Cubby



I. Clamp Trim Piece (H) to front of Shoe Box assembly.



II. Use #2 driver bit to drive 1 1/4" pocket-hole screws.



## STEP 12:

### Attach Vertical Shelf Panels



I. Clamp one Side Panel (E) flush with the shoe box cubby side



II. Use #2 driver bit to drive 1 1/4" pocket-hole screws.



III. Clamp second Side Panel (E) to the top of the shoe cubby assembly, using reference lines to align pieces.



IV. Use #2 driver bit to drive 1 1/4" pocket-hole screws.



## STEP 13:

### Attach Top / Bat Rack



I. Clamp Top / Bat Rack (F) to Vertical Shelf Panels (E), using reference lines to align pieces.



II. Use #2 driver bit to drive 1 1/4" pocket-hole screws.



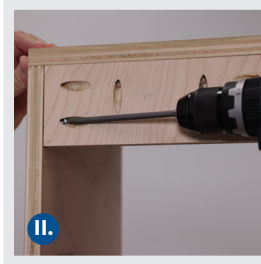
## STEP 14:

### Attach Short and Long Hanger Boards

**Note:** Short Hanger Board mounts under Top / Bat Rack; Long Hanger Board mounts under top of Shoe Cubby.



- I. On back of assembly, clamp Short Hanger Board (I) to Top / Bat Rack (F).



- II. Use #2 driver bit to drive 1 1/4" pocket-hole screws.



- III. On back of assembly, clamp Long Hanger Board (J) to Shoe Cubby.



- IV. Use #2 driver bit to drive 1 1/4" pocket-hole screws.

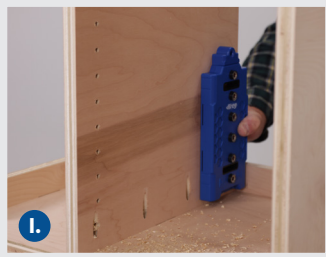


## STEP 15:

### Install Shelf

**Note:** If working with the bundled version, use the Kreg® Shelf Pin Jig to add adjustable shelving. If working with the base kit, install the shelf using the Kreg® Quick-Flip and screws.

#### For installation with the Shelf Pin Jig



- I. Start at the top or bottom and drill shelf pin holes in each Vertical Side Panel (E). Refer to the Shelf Pin Jig manual for detailed instructions.

**Note:** You can add shelf pin holes up the entire length if you plan to add additional shelves or want more flexibility in shelf placement.



- II. Insert shelf pins at the desired location.

- III. Place Shelf (G) on shelf pins.



#### For installation without the Shelf Pin Jig

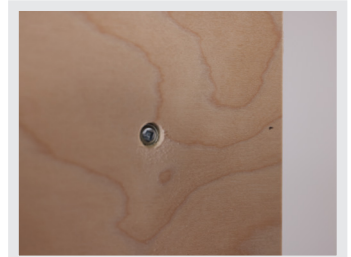


- I. Clamp Shelf into position and use a tape measure to double-check the consistency of screw placement.  
**Tip:** Measure from the top and mark your drill holes for shelf mounting screws.



- II. Use the drill bit side of the Quick-Flip to create counterbore pilot holes.

- III. Use the #2 driver bit side of the Quick-Flip to drive 1 1/4" pocket-hole screws.





## STEP 16:

### Finish It



I. Use paint, stain, stickers, stencils, and more to add personal touches.

II. Once finished customizing, take a photo and post it with the #builtwithkreg hashtag to show your work and see what others are building with Kreg.

## LEARN MORE WOODWORKING TIPS



Scan here to discover helpful how-to articles and videos filled with woodworking tips and tricks.



## FIND INSPIRATION FOR YOUR NEXT PROJECT



Scan here to browse over 1,000 project plans and discover your next pocket-hole project.



## VISIT KREG ACADEMY



Scan here to visit our Foundations of Building course page and get access to a library of content designed specifically to help you build your woodworking skills.



## WE'RE HERE TO HELP

We want you to have an exceptional project building experience. If you have questions or need support, please get in touch. 1-800-447-8638 | [technicalsupport@kregtool.com](mailto:technicalsupport@kregtool.com)